

# Flues and chimney systems

Complete systems overview

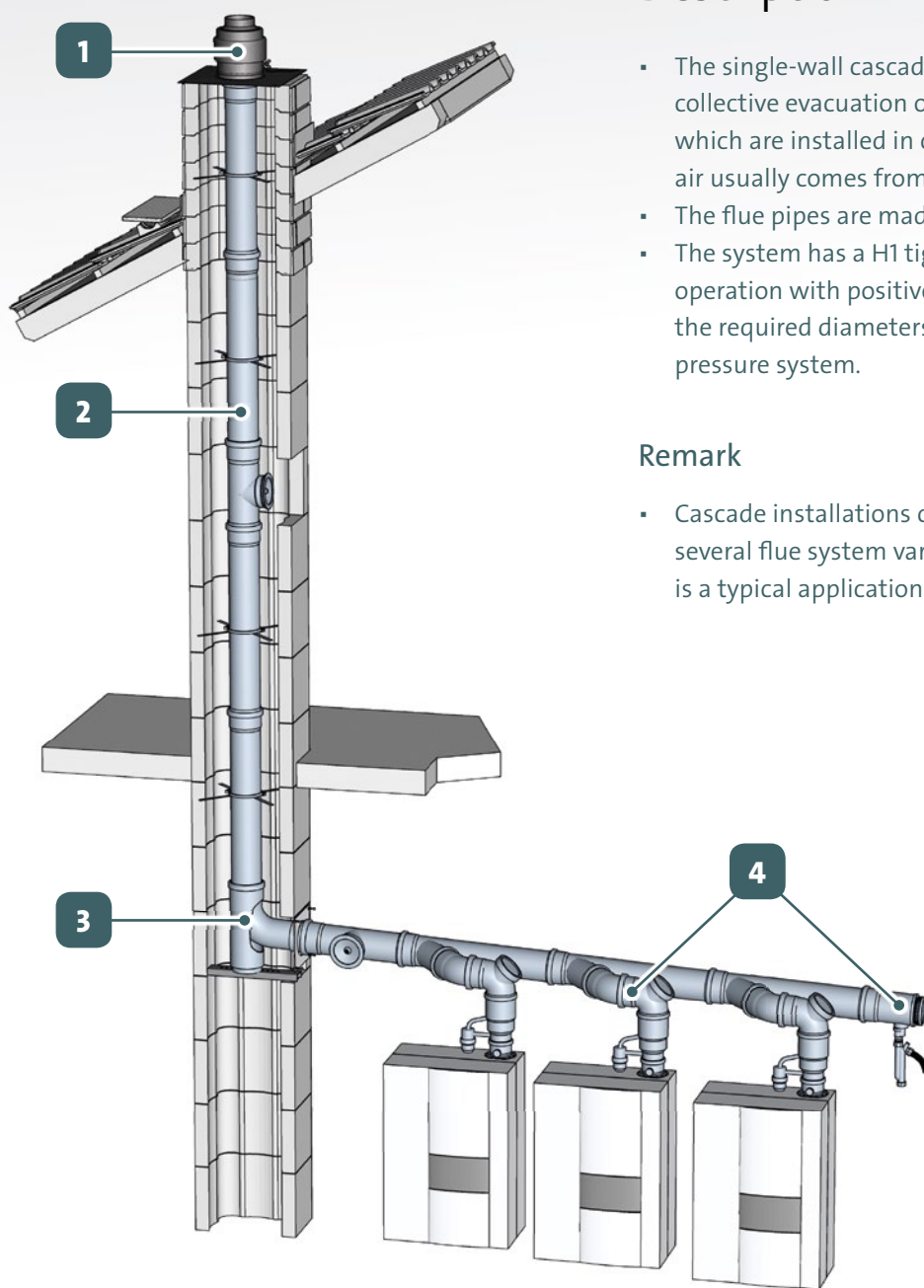
# Exceptional installations in cascade | single-wall

## Description

- The single-wall cascade system is meant for collective evacuation of flue for several boilers which are installed in cascade. The combustion air usually comes from the boiler room.
- The flue pipes are made in PP.
- The system has a H1 tightness class which enables operation with positive pressure. This reduces the required diameters compared to a negative pressure system.

## Remark

- Cascade installations can be combined with several flue system variations. The system image is a typical application and is meant as example.



- 1** Terminal  
→ page 44
- 2** In the chimney  
→ page 44
- 3** System support  
→ page 44
- 4** Cascade connection materials  
→ page 45

## Technical details

CE marking	EN14471 T120 H1
Temperature class	T120
Seals	EPDM for flue pipe connections
Pressure class of the system	H1 (5.000 Pa)
Available diameters [mm]	110, 125, 160, 200, 250, 315
Installation types	<b>B2</b>

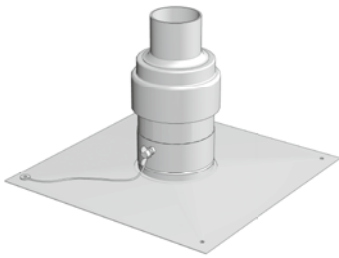
## Features and benefits

- The PP pipes can be easily cut to adjust the length
- Optimal flexibility combined with maximum robustness
- Chimney calculations possible on request
- Lightweight; easy to handle and easy to shorten
- Plastic materials; less risk of injuries as result of sharp edges
- Transparent material; easy to inspect during installation
- Non-return valves available



1

## Terminal

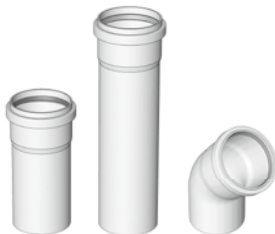


### INOX terminal

- Complete chimney top
- Outer part in INOX
- Flue pipe in UV-resistant PP or INOX
- For 125, 160, 200, 250 and 315
- Wind angle class A45

2

## In the chimney



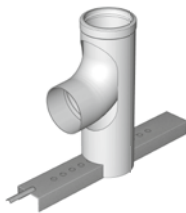
### Extension materials

Flue pipes with lengths of 250, 500, 2000 and 2000 mm

- 15°, 30°, 45° and 87° bends
- In translucent PP
- Some parts available in black or white
- 315 variant in PPs, in grey

3

## System support

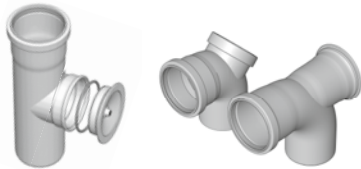


### Support parts

- Small diameters; a metal support rail with PP bend
- Large diameters; support pipe that stands on the floor and features two gaps for a metal rail support

4

## Cascade connection materials



### Inspection parts

- T-pieces
- Several bends with inspection caps



### Adaptors

- For the right boiler connection
- Available for any configuration



### Cascade collector

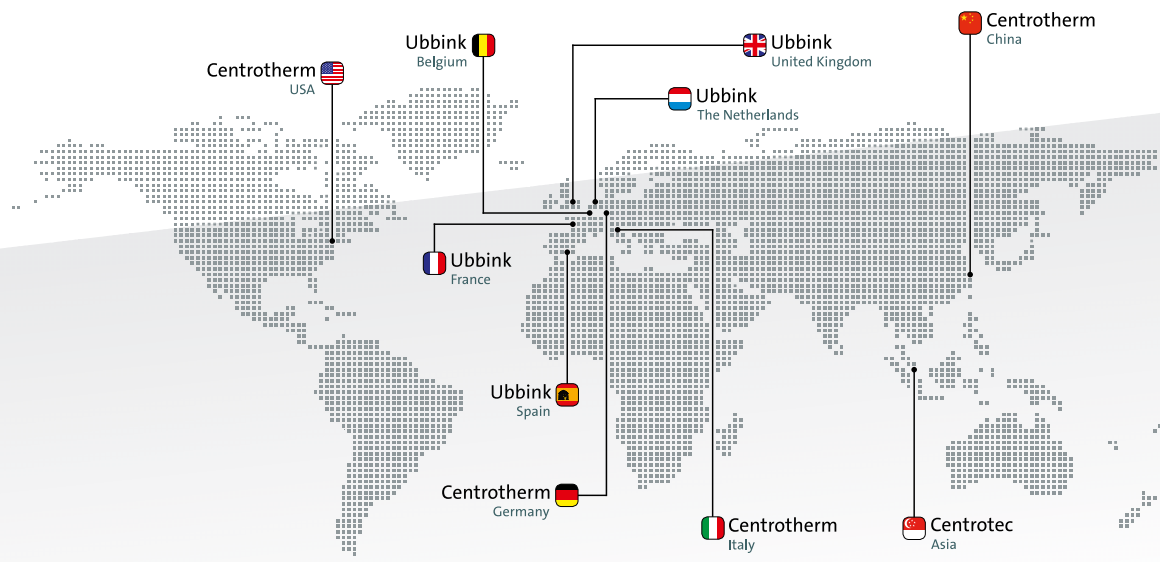
- For connecting boilers in cascade installation
- Easy to cut to length for multiple usage
- Easily connect multiple connectors up the required number of boiler connections



### Cascade end-piece

- With inspection end-part
- With siphon connection

# Ubbink Centrotherm group



- Ubbink Netherlands** [www.ubbink.nl](http://www.ubbink.nl)
- Ubbink Belgium** [www.ubbink.be](http://www.ubbink.be)
- Ubbink France** [www.ubbink.fr](http://www.ubbink.fr)
- Ubbink Spain** [www.ubbink.es](http://www.ubbink.es)
- Ubbink United Kingdom** [www.ubbink.co.uk](http://www.ubbink.co.uk)
- Centrotherm Germany** [www.centrotherm.com](http://www.centrotherm.com)
- Centrotherm Italy** [www.centrotherm.it](http://www.centrotherm.it)
- Centrotherm U.S.A.** [www.centrotherm.us.com](http://www.centrotherm.us.com)
- Centrotherm China** [www.centrotherm-china.com](http://www.centrotherm-china.com)

[www.ubbink-centrotherm.com](http://www.ubbink-centrotherm.com)

© 2015 - Ubbink Centrotherm Group | Content is subject to change without notice | Availability and configurations may differ per country | UCG-2015-03-V01

